

**X J - 'CONNECTING COASTAL COMMUNITIES' – DELYN - LUF PROGRAMME GOVERNANCE ARRANGEMENTS**

**Cabinet (6 monthly standing agenda item)**  
**Function:** Oversight of council match funding spend and ensuring strategic alignment across all programmes relating to coastal communities  
**Remit:** Decision-making power to make major changes to programme plan (subject to UK Government approval). Final point of escalation for programme risks and issues.

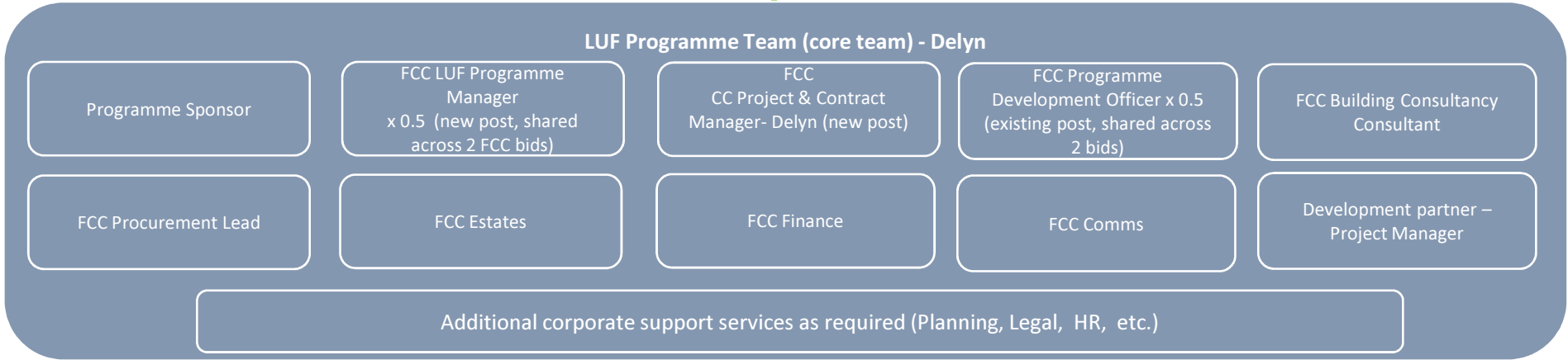
**Environment and Economy Overview and Scrutiny Committee (6 monthly standing agenda item)**  
**Function:** To provide oversight and scrutiny of programme performance, spend and benefits realisation.  
**Remit:** Appraise 6 monthly programme update reports

**Chief Officer Team (quarterly standing agenda item)**  
**Function:** Monitor progress and act as point of resolution for escalated risks and issues from LUF Programme Board. Ability for Chief Officer Team members to resolve risks and issues in between meetings.  
**Remit:** To appraise quarterly progress, spend and risks reports, including delivery plan and financial spend analysis. To intervene/resolve programme level issues escalated by Programme Board.

**Planning, Environment and Economy Programme Board - (quarterly standing agenda item)**  
**Function:** Internal non-decision making body responsible for monitoring and scrutinising the effective management of change, in conjunction with other capital based projects relating to coastal communities.  
**Remit:** To receive quarterly progress and risks reports, including delivery plans and financial spend analysis. To oversee M&E process and monitor benefits realisation.

**LUF Programme Board (monthly) - Alyn & Deeside and Delyn (2 separate bids)**  
**Function:** Directly manage implementation of all aspects of LUF programme. Active management of delivery plans, procurement activity, contract management and M&E process. Active monitoring of progress/spend and management of risks and issues. Escalating risks and issues by exception  
**Remit:** Operational accountability for all aspects of programme delivery, spend, monitoring and reporting. Risk and issue ownership.

**Monthly contract management meetings – Programme Sponsor, Programme Manager, Project & Contract Manager & Development Partner Project Manager**



**External Monitoring and Evaluation partner**

Program assurance f...  
 including FCC Corp Performance Programme

**Flintshire Economic Recovery Team Group**  
 Multi-agency to oversee development delivery of economic recovery work stream

**Coastal Flood Delivery Group**  
 be established to maintain an effective delivery partnership between local private, voluntary and community sector organisations. Partnership for on effective implementation of LUF programme other transformational projects impacting on coastal communities and businesses